

圓柱掛鎖



TM-067

Cam lock



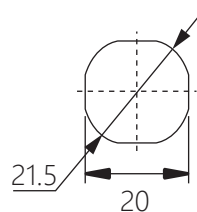
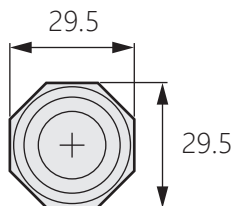
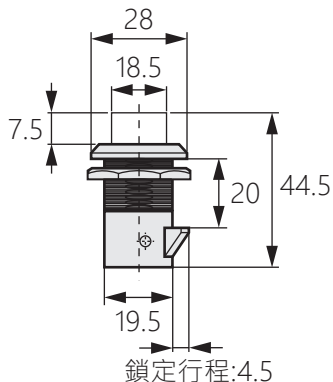
商品介紹 Product description

按壓即可開門，設計輕巧、省力，操作簡單。

- 材質：鋅合金(ZDC)
- 表面處理：亮光鉻
- 用途：小型機箱機櫃、控制箱側門

The door can be opened by pressing, the design is light and labour-saving, and easy to use.

- Material: Zinc Alloy (ZDC)
- Finish: Mirror polishing
- Uses: Small chassis cabinet, side door of control box.



開孔尺寸

商品型號	鑰匙
TM-067-1	有鑰匙
TM-067-2	無鑰匙