

# 牢固信箱鎖



TM-065

Special letter box lock

商品介紹 Product description

外觀小巧，操作簡單，鎖片帶有溝槽，可勾住門板。

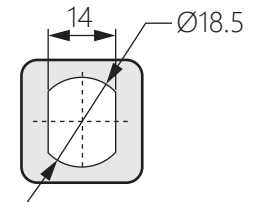
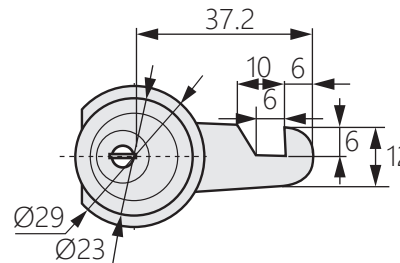
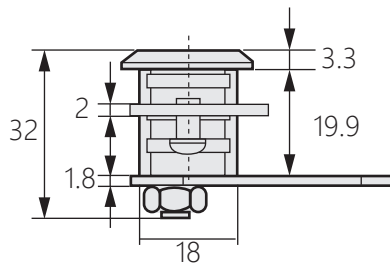
- 材質：主體為鋅合金、冷軋板
- 表面處理：本體(鍍亮鉻)、鎖片(鍍白鋅)
- 用途：控制箱、電力箱、機箱機櫃、信箱
- 備註：鎖體表面為橘皮紋處理。

Small size and easy to operate. The locking piece has a groove to firmly hook the door panel.

- Material: Main body is zinc alloy, cold rolled plate
- Finish: Main unit (Bright chrome)  
Lock (white zinc plated)
- Uses: Control box, power box, chassis cabinet, mailbox.
- Note: The surface of the lock body is treated with orange peel.



[ TM-065-1 ]



[ TM-065-2 ]

