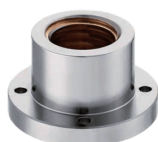


## Ultra heavy duty level adjusters

## 商品介紹 Product description



[JZ-275-2]



[TH-275-2]  
專屬配件

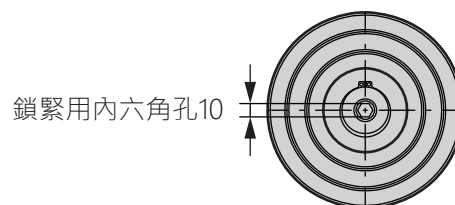
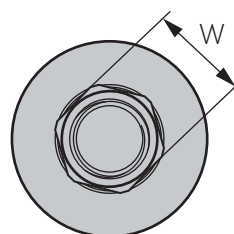
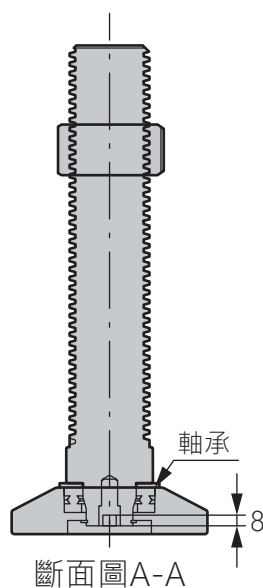
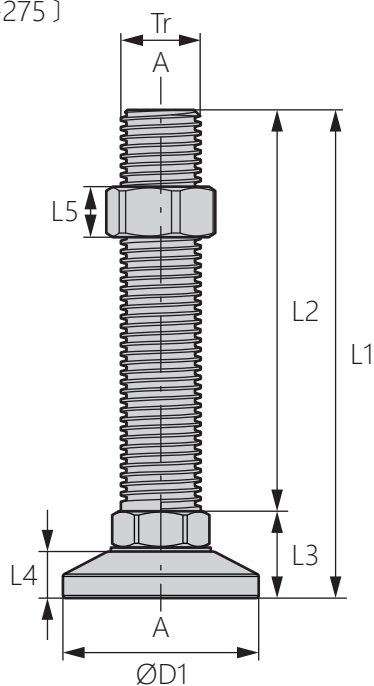
1. 腳座系列中，具備最大容許荷重。
2. 最適合用於大型設備，可由下方以電動工具快速安裝。
3. 內建軸承設計，高度調整流暢不費力。

- 材質：本體-機械構造用碳素鋼鋼材、底座-黃銅
- 表面處理：本體-化學鍍、底座-化學鍍磷
- 用途：半導體製造設備、大型設備等
- 備註：因螺桿牙距特殊，請務必與TH-275配件組合搭配

1. Features the largest allowable load of all level adjusters.
2. Installation possible from below using a power tool, ideal for large devices.
3. Smooth height adjustment with bearings.

- Material: Body-S45C、cbrass
- Finish: Body-electroless nickel plating  
base-electrolytic nickel-phosphorous plating
- Uses: Semiconductor manufacturing equipment, Large-sized equipment, etc.
- Note: Special thread pitch requires use in combination with the TH-275 accessory kit.

[JZ-275]



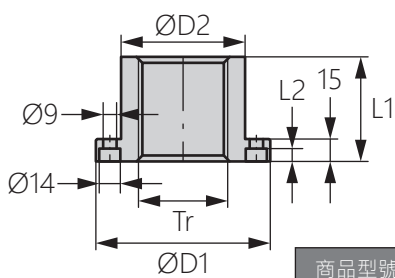
鎖緊用內六角孔10

商品型號	L1	L2	L3	L4	L5	D1	Tr	W	垂直使用荷重(N)	單件重量(g)
JZ-275-1	204	150	54	30	34	127	42*P6.0	64	63,700	4,700
JZ-275-2	365	300	65	35	38	147	52*P7.0		88,200	8,900
JZ-275-3	265	200					60*P7.0	107,800	10,700	
JZ-275-4	365	300								

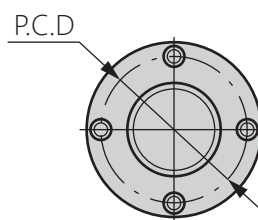
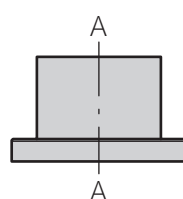
搭配TH-275使用範例



[TH-275]



斷面圖A-A



商品型號	L1	L2	D1	D2	Tr	P.C.D	單件重量(g)
TH-275-1	50	6.4	97	63	42*P6.0	78	1,300
TH-275-2	60	8.6	107	73	52*P7.0	88	1,700
TH-275-3	70	6.4	117	83	60*P7.0	98	2,300