

# 開閉支撐器

Open and close support



**HG-005**



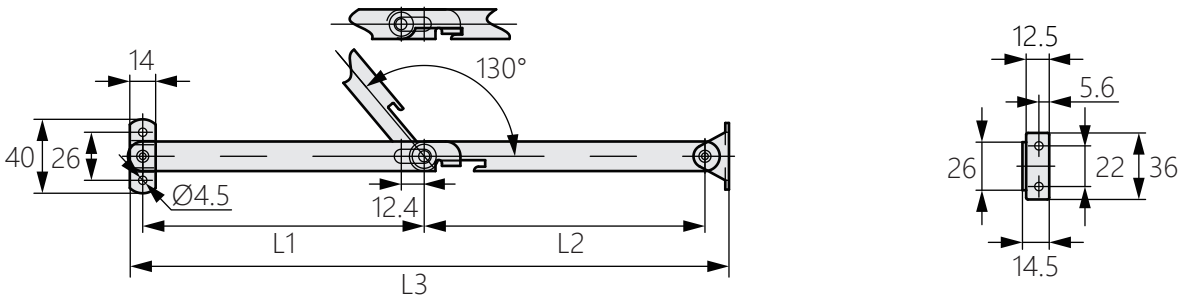
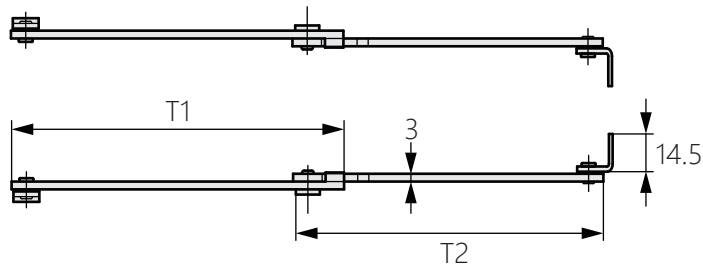
## 商品介紹 Product description

1. 由不銹鋼製成，經久耐用且耐腐蝕。
2. 左右分開使用。

- 材質：不鏽鋼(SUS304)
- 表面處理：滾筒拋光
- 用途：控制面板、工業機械等

1. Made of stainless steel for durability and corrosion resistance.
2. Use separately right and left.

- Material: Stainless steel(SUS304)
- Finish: Barrel polishing
- Uses: Control panel, industrial machinery, etc.



商品型號		L1	L2	L3	T1	T2
左邊	右邊					
HG-005-1L	HG-005-1R	152.4	152	325.4	180	168
HG-005-2L	HG-005-2R	102.4	102	225.4	130	118