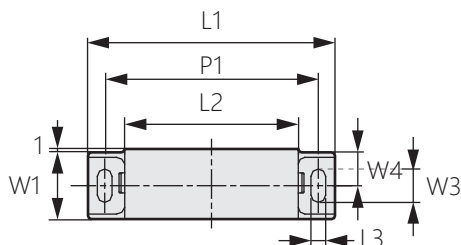
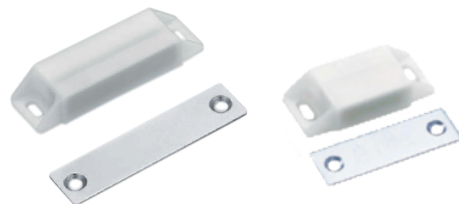


無塵門吸

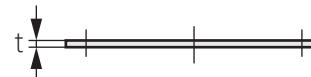
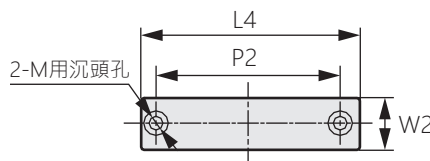
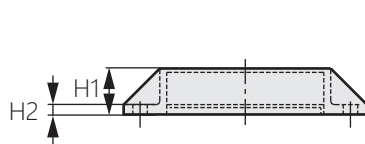
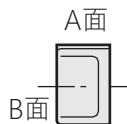
Magnet catch



DK-56-B



受板吸板



商品介紹 Product description

- 1.磁體為密閉構造，不會產生粉塵。
- 2.鎖扣板採用不鏽鋼鋼板(SUS430)。
- 3.安裝孔為長孔，可進行安裝後的微調。
- 4.圖紙中A、B兩面皆可吸附。
- 5.適用於無塵室。

1. The magnet is a closed structure and does not generate dust.
2. The locking plate is made of stainless steel plate (SUS430).
3. The installation hole is a long hole, which can be fine-tuned after installation.
4. Both sides of A and B in the drawing can be adsorbed.
5. Suitable for clean room.

商品型號	L1	L2	L3	L4	W1	W2	W3	W4	t	H1	H2	P1	P2	M	吸附力 N	
															A 面	B 面
DK-56-B-1	74	52	4.4	76	20	18	10	10	2	14	3	64	64	4	75±20%	50±20%
DK-56-B-2	48	28	4.4	50	20	15	10	10	1.5	11.3	3	38	38	3	14±20%	4.9±20%
DK-56-B-3	38	24	3.2	40	10	11	5.6	5	1.5	10	2	31	32	3		