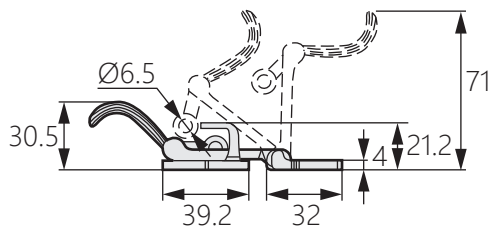


不鏽鋼平面搭扣

Stainless steel flat door buckle



DK-053



商品介紹 Product description

- 1.可安裝於側門及平門。
- 2.可加裝銷釘或鎖頭進行二次緊固。

- 材質：不鏽鋼SUS304
- 表面處理：鏡面拋光
- 用途：機箱機櫃、工業箱體等
- 備註：若箱體內壓力過大，門可自行彈開。

1. Can be installed on side doors and flat doors.
2. Pins or locks can be added for secondary tightening.

- Material:Stainless steel SUS304
- Finish: Mirror polishing
- Uses: Chassis cabinets, industrial cabinets, etc.
- Notes: If the pressure inside the box is too high, the door can pop open by itself.

建議安裝距離62-67mm

